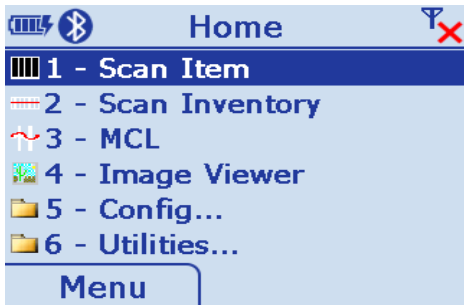


INSTRUCTIONS FOR MT 2070 BARCODE SCANNER



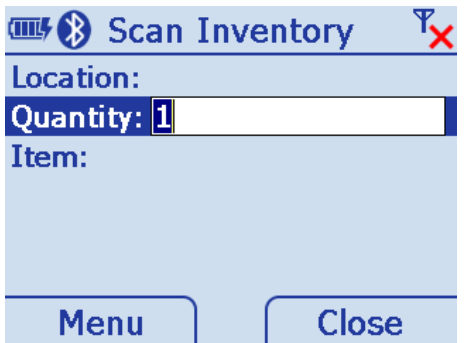
This scanner may go into sleep mode press the trigger (yellow button on handle) to wake.

1. SCANNING INVENTORY – SELECT OPTION 2 TO BEGIN SCANNING

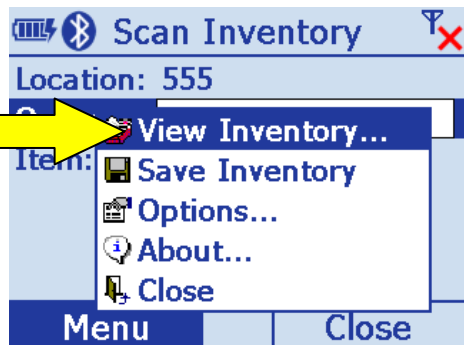


SCAN INVENTORY - WHEN FINISHED SCANNING GO TO #2.

2. VIEW INVENTORY



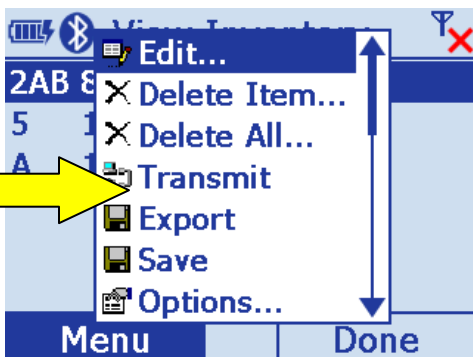
press **Menu** key on the keypad to access the menu



Press **ENT** key to View Inventory



3. UPLOAD/TRANSMIT INVENTORY



press **ALT** to access the **Menu**



scroll down to **Transmit** and press the **ENT** key

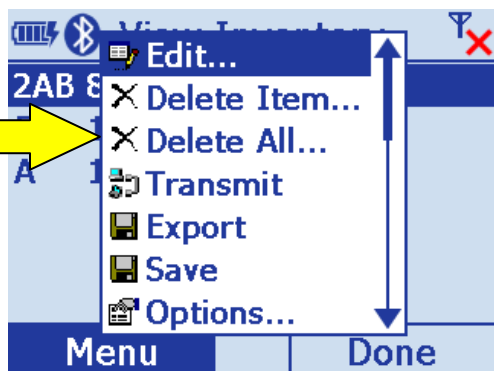
The inventory will now be transmitted to the server.


Continued on back



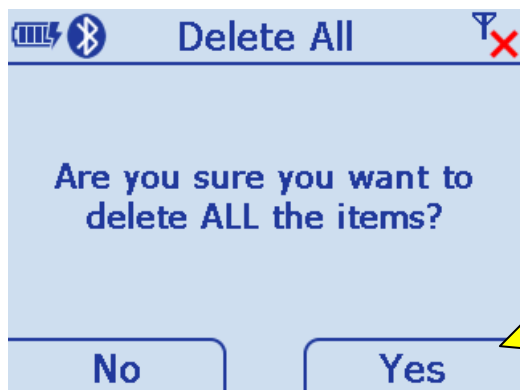
Data is not deleted after transmission.

6. DELETE INVENTORY



press  to access the **Menu**

scroll down to Delete All ... and press the **ENT** key



press  to answer Yes



All items shall be deleted; barcode device is ready to be placed in the cradle for charging.